

E V O L V E

/ interior design



# About

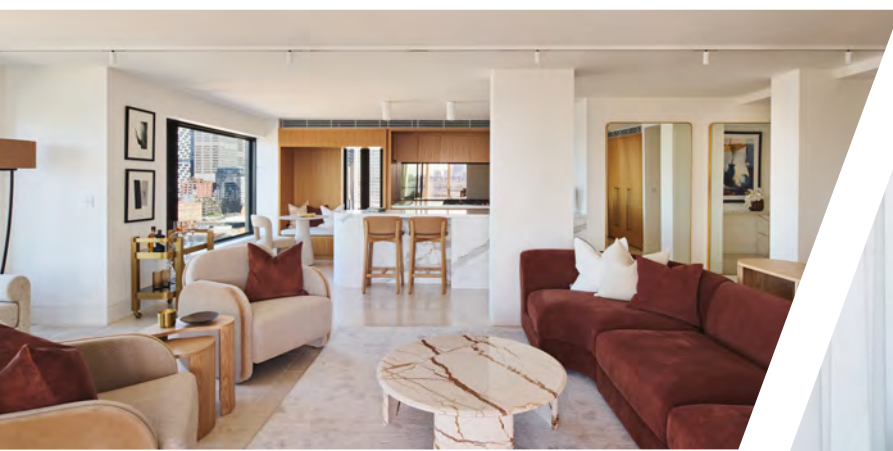
EVOLVE Interior Design is an advocate of bespoke and tailored design and much like our services, we know our client's preferences and properties are unique. Which is why we always work closely with our clients to develop our designs to achieve their goals and desired lifestyle.

## WHY EVOLVE INTERIOR DESIGN

Throughout the process our methodical approach ensures we always listen to requirements, and are flexible if things change, meaning our clients are always satisfied with the end result.

## TYPES OF INTERIOR DESIGN SERVICES

- Renovations and restorations
- Project management & implementation
- Tradespeople sourcing
- Space planning & furniture placement
- Furniture, product, accessory selection & sourcing
- Window dressing and soft furnishing selection
- Outdoor living areas
- Landscaping
- Kitchen & bathroom design
- Surface selection e.g. tiles, benchtops, splashbacks
- Colour schemes
- Floor coverings
- Lighting selections



# Interior Design Process

## 1 CONSULTATION

- **THE CALL:** Initially a call will take place to discuss your requirements. After the call, you will receive our Service Agreement which outlines the fees and services we provide.
- **VISITING YOU:** Upon receipt of the signed Service Agreement, we will allocate one of our qualified Interior Designers who will schedule an onsite consultation. During this time, we will discuss: your lifestyle requirements, any ideas or preferences, as well as additional factors such as existing items you may wish to retain.

## 2 PROJECT

- If your project scope is larger than the initial onsite consultation, then you may wish to engage our project services where our Interior Designers progress in a way suited to you and your budget, for example many of our clients take a hands-off approach, whereas others may prefer to be heavily involved and perform some of the tasks themselves. Whatever your style of working we are happy to accommodate.
- In the project phase, the Interior Designer will review their discussion notes, space plans and photos to compile specific documentation based on your requirements. This may include project scope, budget, timeline, mood boards, furnishing recommendations, paint schedule, window dressing treatment, surface selection, product samples/quotes and stock availability.

## 3 INSTALLATION

- The installation of furnishings can be completed in a single phase or staged over a period of time, whatever is most convenient for you.
- If required, we can co-ordinate the entire project including suppliers and trades to ensure the process runs as smooth as possible.





**E V O L V E**

/ interior design

info@evolvegp.com.au

1300 78 30 60



evolvegp.com.au